

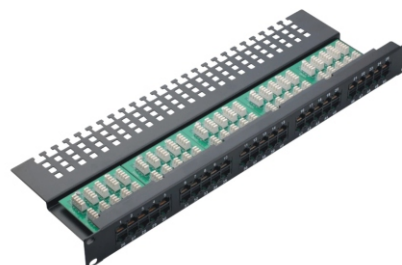
## Copper Patch Panel

### 50 Ports Voice Patch Panel

#### Description

DuraNet 50 Ports RJ45 Voice Patch Panel is patch panel is designed to provide a cost-effective and simply way to your ISDN applications

- Numerical identification on all outlets
- Six port blocks for ease of management
- Built in rear cable management
- IDC punch down termination
- Colour coded IDC blocks
- 1U Patch Panel to mount in any standard rack
- Patching with standard RJ45 UTP patch cords



#### Technical data

##### Physical:

Description	Values
No. of Ports	50
Dimensions	44mm (H) x 483mm (L) x 129 (D)
Panel Frame	Cold Rolled Plate
IDC Material	New PC, Accept 22-24 AWG Wire
Terminal	Phosphor Bronze Gold over Nickel Plating.
IDC Conductor	0.5mm Phosphor Bronze, Tin Plating
Contact Compatibility	22-26AWG Stranded and Solid wires.

##### Electrical:

Description	Values
Current Rating	1.5amps
Insulation Resistance	$\geq 500\text{m}\Omega$
Contact Resistance	$\leq 10\text{m}\Omega$
DC Resistance	$\leq 0.1\Omega$
DC/AC Volt Endurance	DC 1000V/AC 750V 1Min

##### Mechanical :

Description	Values
Plug Insertion Life	$\geq 750$ Cycles with FCC Compliant RJ-45 Plug
IDC Life	$\geq 250$ Cycles
Contact Resistance	20m Ohm
Insulation Resistance	$\leq 100\text{M OHM @}100\text{ V DC}$
Operating Temperature	-10°C to +60°C
Storage Temperature	-40°C to +70°C

##### Standard Verification:

- ISO/IEC 11801 Class C 2 Pair
- RoHS Compliant
- UL 1863

#### Ordering information

Description	Item number
50 Ports RJ45 Voice patch panel	DNC-PPXU1U-50P-V